

Slide 1

m DEPARTMENT OF HEALTH

Minnesota Safe Harbor
April 25, 2019
StreetWorks Beyond the 101: Multidisciplinary Safe Harbor Conference

Paula Schaefer | MN Department of Health,
Paula.Shaefer@state.mn.us

Slide 2

Safe Harbor Statewide Services

- Regional Navigators and Specialized Community Services
- OVC Expansion Grant to include Labor Trafficking
- Training & Technical Assistance
- Youth Outreach Materials
- Wilder Evaluation Report
- Safe Harbor for All

- Specialized Housing/Shelter
- Youth Outreach
- Child Protection/Child Welfare
- Vulnerable Adult Protection
- Missing and Endangered Persons
- Internet Crimes Against Children
- 3 Regional Law Enforcement Task Forces
- 1 Statewide Task Force run by the BCA- 24/7 reporting 651.793.7000
- Training/Consultation for Law Enforcement on Sex Trafficking Investigations
- Protocol Guidelines
- Safe Harbor Protocol Team Formation Starter Kit: A Guide for New Teams
- Protocol Implementation

Slide 3

Commercial Sexual Exploitation
Eligibility for Safe Harbor Services for Youth Ages 24 and younger

Anything of value (e.g., money, drugs, food, shelter, rent, or higher status in a gang or group)

- OR -

a **promise** of anything of value is given to a person by any means in exchange for any type of sexual activity.

A third party may or may not be involved.

Slide 4

Who are the traffickers?

Traffickers can be anyone

- Range from large scale national and international crime networks to small scale individuals recruiting individuals
- Pimps, brothel owners, salon owners
- Neighbors, friends, "boyfriends", "girlfriends", family members

Slide 5

Mapping the Demand:
Sex Buyers in the State of Minnesota 2017

- Sex buyers are *predominantly middle-aged, white, married men* from across the state of Minnesota.
- Many buyers seek young adult victims, with some willing to buy sex from a minor. **Some sex buyers specifically seek out minors.**
- Most sex buyers travel during the workday between **30-60 miles** to buy sex. Some will travel farther to purchase minors or individuals in specialty market-segments.
- Buyers also purchase sex during business trips, bachelor parties, and hunting and fishing trips.

Martin, et al, Urban Research and Outreach-Engagement Center (UROEC), U of M

Slide 6

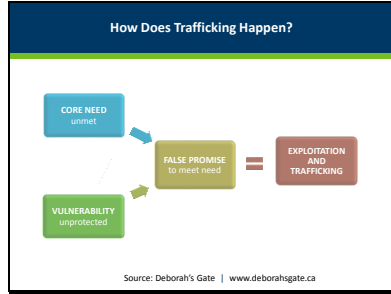
Who are the victims?

Victims can be any age, gender, race or ethnicity

People may be **more** at risk to be trafficked if they...

- Have mental health issues and/or chemical dependency
- Have physical and/or cognitive disabilities
- Are children or youth
- Are persons of color
- Are homeless
- Are lesbian, gay, bisexual, or transgender, gender non-conforming
- Lack immigration status
- Are in trouble with the law
- Are runaways
- Experience poverty

Slide 7



Slide 8

-
- Potential Signs of Sex Trafficking**
- Person has an abrupt change in attire, behavior, or relationships
 - The presence of an older "boyfriend" or "girlfriend"
 - Travel with an older male/female who is not a guardian
 - Sudden presence of expensive material possessions
 - Youth lacks control over his/her schedule, money, and/or proof of identification
 - Signs of physical trauma, including bruises, cuts, burns, and/or scars
 - Lying about age, where they've been, who they've been with, etc.

Slide 9

m DEPARTMENT OF HEALTH

Understanding Victims

Slide 10

What is a Trauma-Coerced Attachment?

Powerful psychological manipulation by traffickers - Victims who believe they are in love with their trafficker are easier to manipulate and control.

Doy-Hak & Egghoven 2019, Journal of Human Trafficking

Slide 11

Why don't victims leave?

- Fear**
 - Actual or threatened abuse/sexual assault/violence to self, family, friends
 - Making an "example" of another victim
 - Threat of criminal prosecution or deportation
 - Blackmail
- Dependency**
 - Withholding money or identity documents
 - Only source of housing, food, clothes
 - Posing as "friend, boyfriend/concerned relative" to induce guilt and feeling indebted
 - Causing or exploiting pregnancy, chemical dependency, etc.
 - Isolation from support networks, service providers, others
- Psychological Factors**
 - "I agreed to it so it's not illegal"
 - "This is my choice"
 - "I've done too much to go back to a normal life"
 - Mind normalizes situation as defense mechanism

Slide 12

Minnesota's Response to Sex Trafficking - No Wrong Door

Slide 13

Safe Harbor Law


Sexually exploited youth
17 years old and under
can no longer be criminalized for engaging in prostitution but should be referred to services.

Sexually exploited and at risk youth
24 years old and under
deserve and are eligible for specialized, trauma-informed services to heal and recover.

Slide 14

Engaging with Victim/Survivors

- Victim-Centered
- Trauma-Informed
- Strengths-Based
- Culturally Responsive
- Youth-Centered



Safe Harbor Protocol Guidelines


Developed by the Massachusetts Department of Children and Families, Office of Child Welfare Services, in partnership with the Massachusetts Department of Justice, Office of the Attorney General, and the Massachusetts Department of Health, Office of Public Health Practice.

Massachusetts Department of Children and Families

Slide 15

Engaging with Victim/Survivors

- Harm Reduction
- Focus on Health and Wellbeing
- Motivational Interviewing – Stages of Change
- Safety
- Confidentiality
- Survivor Input



Massachusetts Department of Children and Families

Slide 16

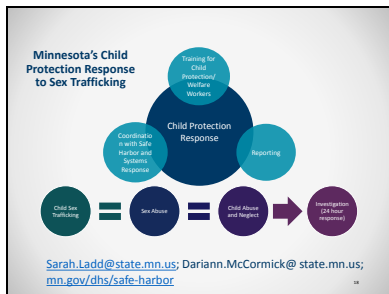


Slide 17

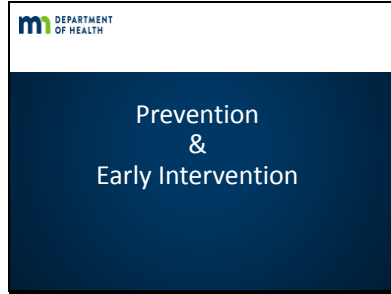
Safe Harbor Shelter and Housing

- Shelter**
 - Short-term residential care with the purpose of providing youth who are victims of sexual exploitation a clean, safe place to stay, and stabilization services.
- Supportive Housing**
 - Longer term housing and supportive services for youth who have experienced sexual exploitation or trafficking to attain and maintain stability and independence.
- Specialized Foster Care**
 - Temporary safe place to stay in a foster home setting specific to youth who have experienced sexual exploitation or trafficking. Specialized training and support is provided to the foster family.
- Outreach**
 - Locate, identify and build relationships with vulnerable and homeless youth, in order to interrupt exploitation by working to meet immediate needs and provide resources.

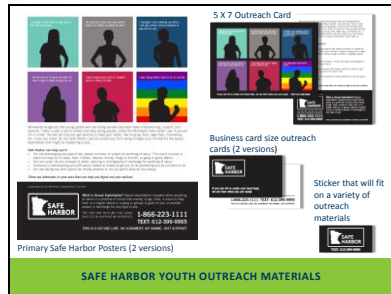
Slide 18



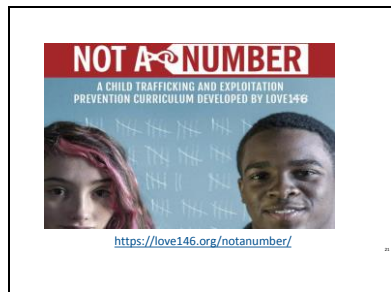
Slide 19



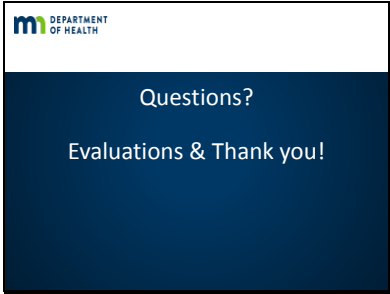
Slide 20



Slide 21



Slide 22



m DEPARTMENT OF HEALTH

Questions?

Evaluations & Thank you!
